



GUAM WATERWORKS AUTHORITY

"Better Water, Better Lives."

Gloria B. Nelson Public Service Building | 688 Route 15 | Mangilao, Guam 96913

Tel: (671) 300-6846

NOTIFICATION

This is a notification of an upcoming project under the United States Environmental Protection Agency Title 2 Construction Grants Program. GWA is inviting interested Contractors ("Bidders") to participate in a bid for construction services for the Route 1 Asan Adelup Hagatna Sewerline Rehabilitation and Replacement Project Phase 2.

The scope of work for this project is similar to work done under the first phase to rehabilitate and replace segments of existing sewer along Route 1 from Asan to Adelup. Preliminary information and a vicinity map are provided in the three attachments to this notification. Information provided in this pre-solicitation notice is preliminary and final quantities may change as the design is completed and the contract documents finalized. Depending on project budget and estimated cost, the Bid Schedule may be divided into a base bid and alternate bids. Funds permitting, alternate bid items will be awarded with the base bid.

It is anticipated that the invitation to Bid for these packages will be advertised by the end of May 2020. We appreciate any interest you may have in providing a bid on the upcoming package. Please carefully monitor GWA's website at <http://guamwaterworks.org/bids/> for future bid details.

Sincerely,

MIGUEL C. BORDALLO, P.E.
General Manager

Attachment 1:

Preliminary information on construction services for the Route 1 Asan Adelup Hagatna Sewerline Rehabilitation and Replacement Project Phase 2

Information provided in this pre-solicitation notice is preliminary and final quantities may change as the design is completed and the contract documents finalized.

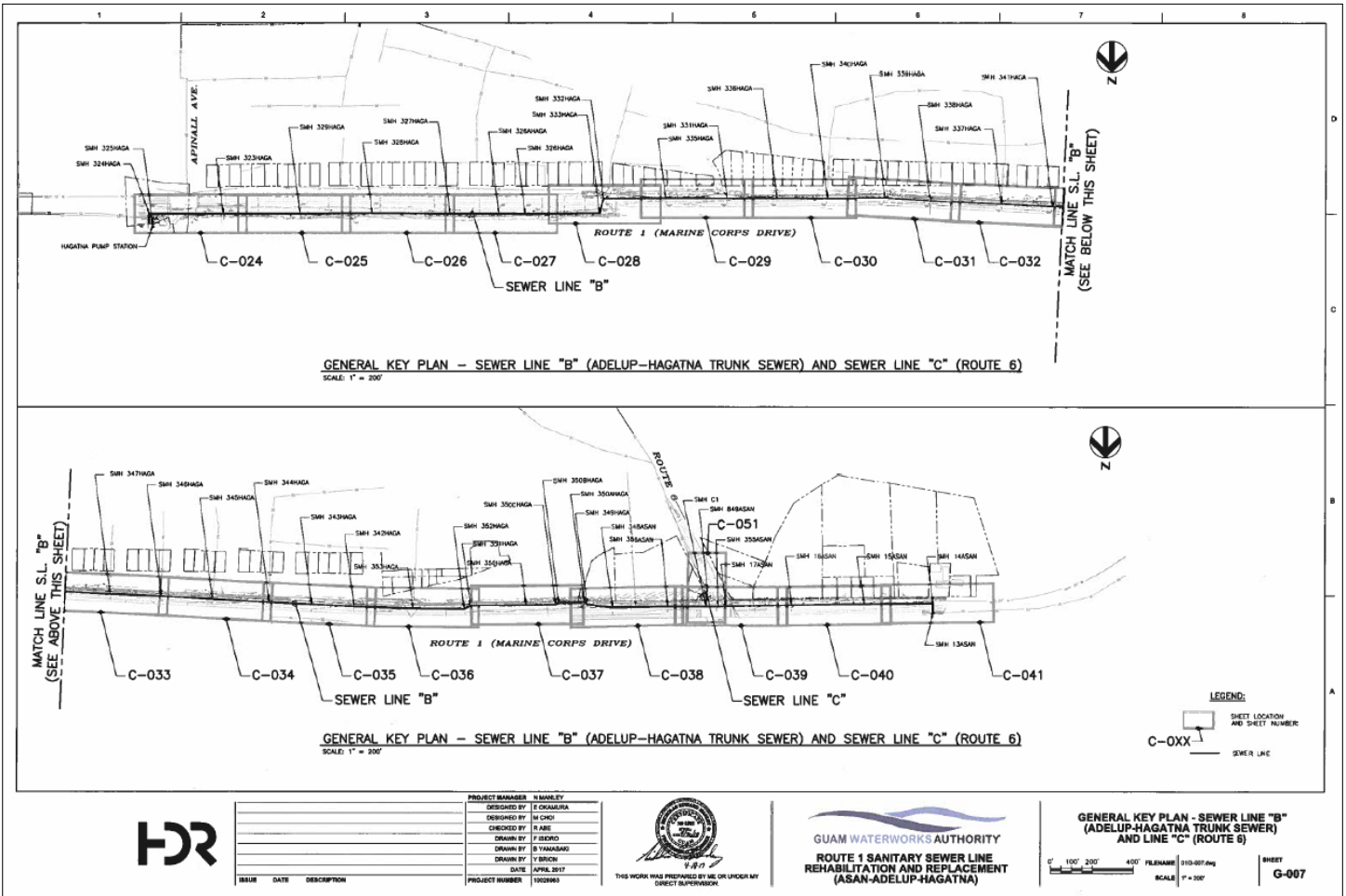
- Rehabilitation will mainly consist of Cured In-Place Pipe (CIPP) lining the existing sewer mains.
- The pipes to be lined with CIPP include 16-inch, 18-inch, 24-inch and 27-inch diameter pipes.
- All pipe segments will require full cleaning and closed-circuit television (CCTV) prior to lining.
- All existing service connections will have to be re-instated following lining.
- All lining activity shall follow National Association of Sewer Service Companies (NASSCO) standards and practices.
- Post-lining CCTV and liner testing shall be required. GWA will provide, as part of the solicitation package, CCTV of the existing sewer collected in 2016 as part of the design and any more recent CCTV collected since that date for review by prospective bidders.
- There may be some sections of pipe that will require point repairs prior to lining.
- There may be some sections that will require only cleaning, including a 16-inch diameter pipe approximately 330 linear feet (LF).
- There will be a new segment of 12-inch sewer to be installed by open-cut excavation and the existing sewer abandoned. The existing 12-inch sewer shall be abandoned.
- Manhole rehabilitation, if any, may consist of any combination of replacing the cone, replacing the manhole cover and frame, replacing the rings and collar, cleaning the manhole, sealing any leaks in the manhole, and recoating the interior of the manhole.

The table below provides approximate quantities of work, in a general itemized list of major work components to be included in the solicitation.

| Major Work Component | Unit of Measurement | Estimated Quantity |
|--|----------------------------|---------------------------|
| 27-inch diameter Sewer Cleaning | LF | 5,500 |
| 24-inch diameter Sewer Cleaning | LF | 1,800 |
| 18-inch diameter Siphon Sewer Cleaning | LF | 250 |
| 16-inch diameter Sewer Cleaning | LF | 1,325 |
| CCTV 27-inch diameter Sewer | LF | 5,500 |
| CCTV 24-inch diameter Sewer | LF | 1,800 |
| CCTV 18-inch diameter Sewer | LF | 250 |
| CCTV 16-inch diameter Sewer | LF | 645 |
| 27-inch diameter Sewer CIPP | LF | 5,500 |
| 24-inch diameter Sewer CIPP | LF | 1,800 |
| 18-inch diameter Sewer CIPP | LF | 250 |
| 16-inch diameter Sewer CIPP | LF | 645 |
| Point Repairs | EA | 5 |
| New 12-inch Sewer Main | LF | 80 |
| Abandon 12-inch Sewer Main | LF | 125 |
| Manhole Interior Cleaning | EA | 5 |
| Manhole Interior Coating | EA | 5 |
| Manhole leak repair | EA | 5 |
| Manhole cone replacement | EA | 5 |
| Manhole cover and frame replacement | EA | 4 |
| Manhole ring and collar replacement | EA | 10 |
| Service Line Reinstatement | EA | 28 |

Attachment 2: Drawing G-007

G-007 shows the overall limits of the project area and location of the sewer lines.



ATTACHMENT 3: VICINITY MAP

