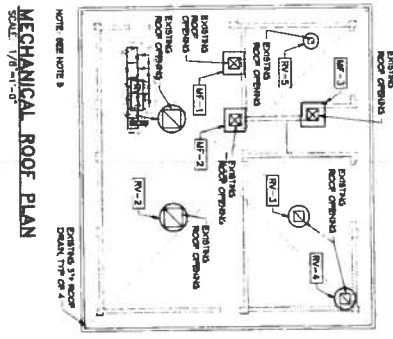
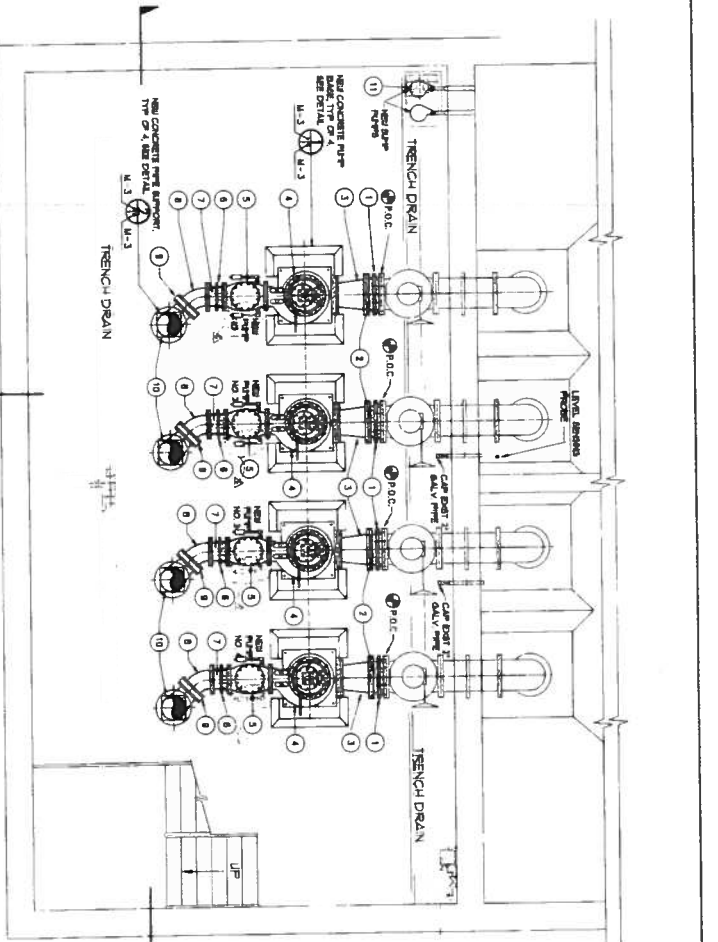


EXHIBIT B

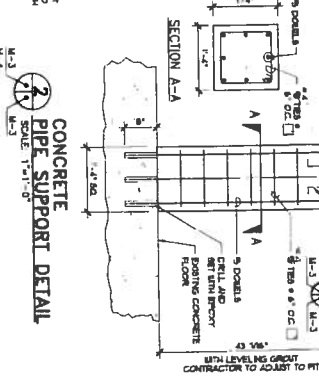
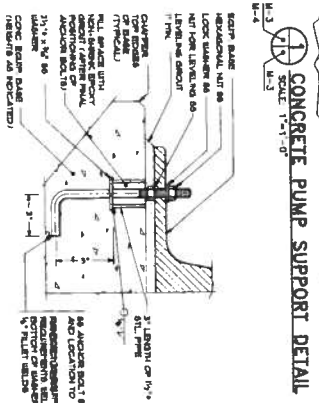


EQUIPMENT NO.	DESCRIPTION	LOCATION	TYPE	CAPACITY ¹	STATIC PRESSURE (IN WG)	EXISTING MOTOR HP	MOTOR DATA	REMARKS
NV-1	ROOF VENTILATOR	DRY WELL	CENTRIFUGAL	11,820 CFM	1/4"	42.74/42	3.0 480 36	ALL ALUMINUM CONSTRUCTION, FINISHED WITH POLYURETHANE ENAMEL. ALL ELECTRICAL CONNECTIONS SHALL BE MADE WITH ALUMINUM CONDUIT AND DISCONNECT SWITCHES. ALL ELECTRICAL CONNECTIONS SHALL BE MADE WITH ALUMINUM CONDUIT AND DISCONNECT SWITCHES.
NV-2	ROOF VENTILATOR	DRY WELL	CENTRIFUGAL	11,820 CFM	1/4"	42.74/42	3.0 480 36	ALL ALUMINUM CONSTRUCTION, FINISHED WITH POLYURETHANE ENAMEL. ALL ELECTRICAL CONNECTIONS SHALL BE MADE WITH ALUMINUM CONDUIT AND DISCONNECT SWITCHES. ALL ELECTRICAL CONNECTIONS SHALL BE MADE WITH ALUMINUM CONDUIT AND DISCONNECT SWITCHES.
NV-3	ROOF VENTILATOR	DRY WELL	CENTRIFUGAL	11,820 CFM	1/4"	42.74/42	3.0 480 36	ALL ALUMINUM CONSTRUCTION, FINISHED WITH POLYURETHANE ENAMEL. ALL ELECTRICAL CONNECTIONS SHALL BE MADE WITH ALUMINUM CONDUIT AND DISCONNECT SWITCHES. ALL ELECTRICAL CONNECTIONS SHALL BE MADE WITH ALUMINUM CONDUIT AND DISCONNECT SWITCHES.
NV-4	ROOF VENTILATOR	DRY WELL	CENTRIFUGAL	11,820 CFM	1/4"	42.74/42	3.0 480 36	ALL ALUMINUM CONSTRUCTION, FINISHED WITH POLYURETHANE ENAMEL. ALL ELECTRICAL CONNECTIONS SHALL BE MADE WITH ALUMINUM CONDUIT AND DISCONNECT SWITCHES. ALL ELECTRICAL CONNECTIONS SHALL BE MADE WITH ALUMINUM CONDUIT AND DISCONNECT SWITCHES.
NV-5	ROOF VENTILATOR	DRY WELL	CENTRIFUGAL	11,820 CFM	1/4"	42.74/42	3.0 480 36	ALL ALUMINUM CONSTRUCTION, FINISHED WITH POLYURETHANE ENAMEL. ALL ELECTRICAL CONNECTIONS SHALL BE MADE WITH ALUMINUM CONDUIT AND DISCONNECT SWITCHES. ALL ELECTRICAL CONNECTIONS SHALL BE MADE WITH ALUMINUM CONDUIT AND DISCONNECT SWITCHES.
MF-1	MAKE-UP FAN	2ND BASEMENT	BLT. DRIVEN, CENTRIFUGAL	2,000 CFM	1/4"	20.7/20.7	1/2 120 16	ALL ALUMINUM CONSTRUCTION, FINISHED WITH POLYURETHANE ENAMEL. ALL ELECTRICAL CONNECTIONS SHALL BE MADE WITH ALUMINUM CONDUIT AND DISCONNECT SWITCHES. ALL ELECTRICAL CONNECTIONS SHALL BE MADE WITH ALUMINUM CONDUIT AND DISCONNECT SWITCHES.
MF-2	MAKE-UP FAN	1ST BASEMENT	BLT. DRIVEN, CENTRIFUGAL	2,000 CFM	1/4"	20.7/20.7	1/2 120 16	ALL ALUMINUM CONSTRUCTION, FINISHED WITH POLYURETHANE ENAMEL. ALL ELECTRICAL CONNECTIONS SHALL BE MADE WITH ALUMINUM CONDUIT AND DISCONNECT SWITCHES. ALL ELECTRICAL CONNECTIONS SHALL BE MADE WITH ALUMINUM CONDUIT AND DISCONNECT SWITCHES.
MF-3	MAKE-UP FAN	NET WELL	BLT. DRIVEN, CENTRIFUGAL	3,500 CFM	1/4"	22.1/22.1	1.0 480 36	ALL ALUMINUM CONSTRUCTION, FINISHED WITH POLYURETHANE ENAMEL. ALL ELECTRICAL CONNECTIONS SHALL BE MADE WITH ALUMINUM CONDUIT AND DISCONNECT SWITCHES. ALL ELECTRICAL CONNECTIONS SHALL BE MADE WITH ALUMINUM CONDUIT AND DISCONNECT SWITCHES.

SEE NOTE 4.
SEE NOTE 5 & 6.



ITEM NO.	DESCRIPTION
1	20" FLANGED COPPING ADAPTER
2	20" STAIN. DUCTILE IRON, FLANGED X 1/2" DIA. END
3	20" X 18" EXCISING BRACKET, DUCTILE IRON, FLANGED
4	1 1/2" X 1 1/2" SANDWICH NON-CLOG WALLMOUNT FAN CENTER DISCONNECT, FINISHED WITH POLYURETHANE ENAMEL. SEE NOTE 1.
5	1 1/2" STAIN. STEEL CHECK VALVE, 0% CONTROLLED, SEE NOTE 1.
6	4000 SERIES F100
7	1 1/2" FLANGED COPPING ADAPTER, WITH 1/2" HOLES
8	1 1/2" STAIN. DUCTILE IRON, FLANGED X 1/2" DIA. END
9	1 1/2" 45° ELBOW, DUCTILE IRON, FLANGED
10	1 1/2" X 1 1/2" 90° REDUCING DUCT ELBOW, DUCTILE IRON, FLANGED
11	SOUP PUMP W/ LEVEL CONTROL, 1/2HP (SEE SPECIFICATIONS)



NOTES:

- NET PUMP NOS. 1 AND 2 ARE SUBSTITUTED FINISHED EQUIPMENT. PUMPS ARE LISTED MODEL C-2012.
- CONNECTION TO PROVIDE. SEE PUMPS 1-4 AND 4. SEE SPECIFICATIONS.
- NET USED.
- FAN STATION MUST REMAIN IN OPERATION DURING THE CONSTRUCTION PERIOD. 1. LISTED NUMBER OF PUMPS SHALL BE MAINTAINED THROUGHOUT THE CONSTRUCTION PERIOD. PUMPING CAPACITY IS LIMITED TO THE FANS OF 12 HOURS AT LEAST 2 WEEKS BEFORE DATE OF OUTRAGE.
- CONNECTION SHALL VERIFY EXISTING DIMENSIONS OF ROOF OPENINGS AND ROOF CURBS PRIOR TO ORDERING.
- CONTRACTOR IS TO PROVIDE REINFORCED CONCRETE FOUNDATION AND PERFORMANCE CHARACTERISTICS. ALL DIMENSIONS SHALL BE CORRELATED WITH ATTACHED FRAMES PRIOR TO ORDERING. PROVIDE THE 1/2" DIA. CURB AS REQUIRED TO MATCH EXISTING WITH MANUFACTURER'S RECOMMENDATIONS. PROVIDE THE 1/2" DIA. CURB AS REQUIRED TO MATCH EXISTING WITH MANUFACTURER'S RECOMMENDATIONS. PROVIDE THE 1/2" DIA. CURB AS REQUIRED TO MATCH EXISTING WITH MANUFACTURER'S RECOMMENDATIONS.
- ALL ELECTRICAL CONNECTIONS SHALL BE MADE WITH ALUMINUM CONDUIT AND DISCONNECT SWITCHES. ALL ELECTRICAL CONNECTIONS SHALL BE MADE WITH ALUMINUM CONDUIT AND DISCONNECT SWITCHES.
- REPLACEMENT OF MV-3 IS FOR UNAPPROVED TYPING AND SHALL NOT BE CONSIDERED AS A MODIFICATION TO THE ORIGINAL DESIGN WHICH IS VALIDATION OF ORIGINAL DESIGN.

AS-BUILT

QUALITY ASSOCIATES, INC.
REGISTERED PROFESSIONAL ENGINEER
STATE OF CALIFORNIA
NO. 41118

QUALITY ASSOCIATES, INC.
REGISTERED PROFESSIONAL ENGINEER
STATE OF CALIFORNIA
NO. 41118

QUALITY ASSOCIATES, INC.
REGISTERED PROFESSIONAL ENGINEER
STATE OF CALIFORNIA
NO. 41118