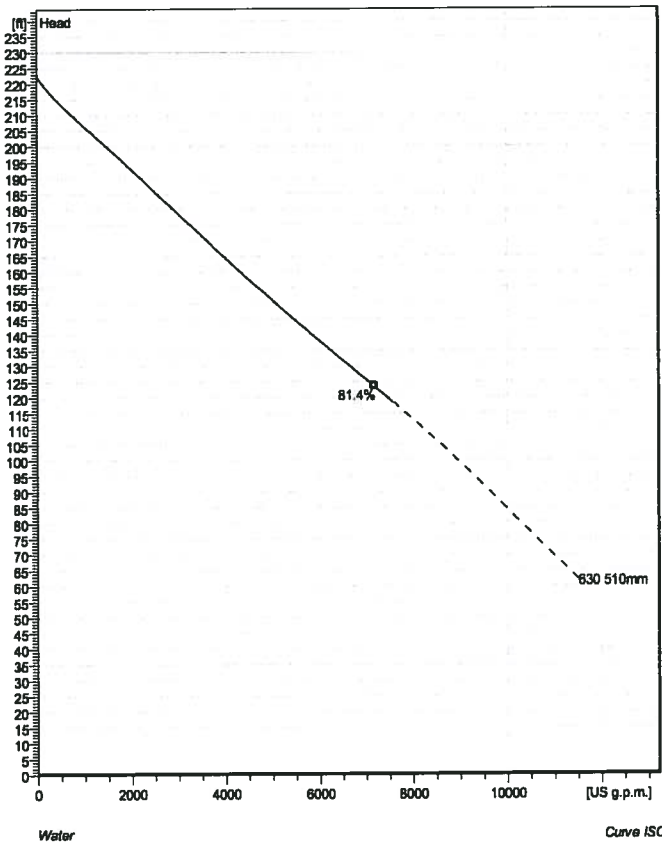
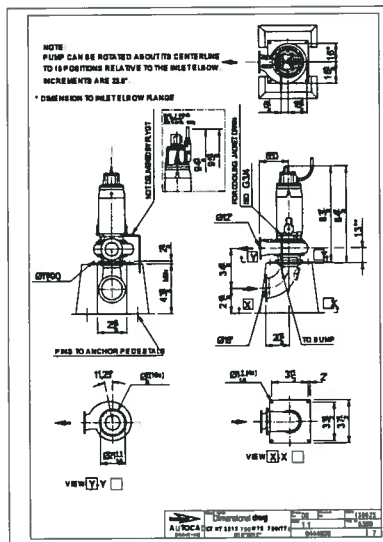


CT 3312/775 3~ 630

Technical specification



Installation: T - Vertical Permanent, Dry



Note: Picture might not correspond to the current configuration.

General

Shrouded single or multi-channel impeller pumps with large throughlets and single volute pump casing for liquids containing solids and fibres. Cast iron design with double sealing technology.

Impeller

| | |
|---------------------------|----------------|
| Impeller material | Grey cast iron |
| Discharge Flange Diameter | 11 13/16 inch |
| Inlet diameter | 13 3/4 inch |
| Impeller diameter | 510 mm |
| Number of blades | 3 |
| 4 inch | 4 inch |

Motor

| | |
|------------------|-----------------------------|
| Motor # | C0775.000 43-56-6BC-D 280hp |
| Approval | FM |
| Stator variant | 1 |
| Frequency | 80 Hz |
| Rated voltage | 480 V |
| Number of poles | 6 |
| Phases | 3~ |
| Rated power | 280 hp |
| Rated current | 345 A |
| Starting current | 2230 A |
| Rated speed | 1185 rpm |
| Power factor | 0.80 |
| 1/1 Load | 0.80 |
| 3/4 Load | 0.75 |
| 1/2 Load | 0.63 |
| Motor efficiency | 94.0 % |
| 1/1 Load | 94.0 % |
| 3/4 Load | 94.0 % |
| 1/2 Load | 83.0 % |

Configuration

Project

Project ID

Created by

Created on

2017-03-03

Last update

CT 3312/775 3~ 630 Performance curve



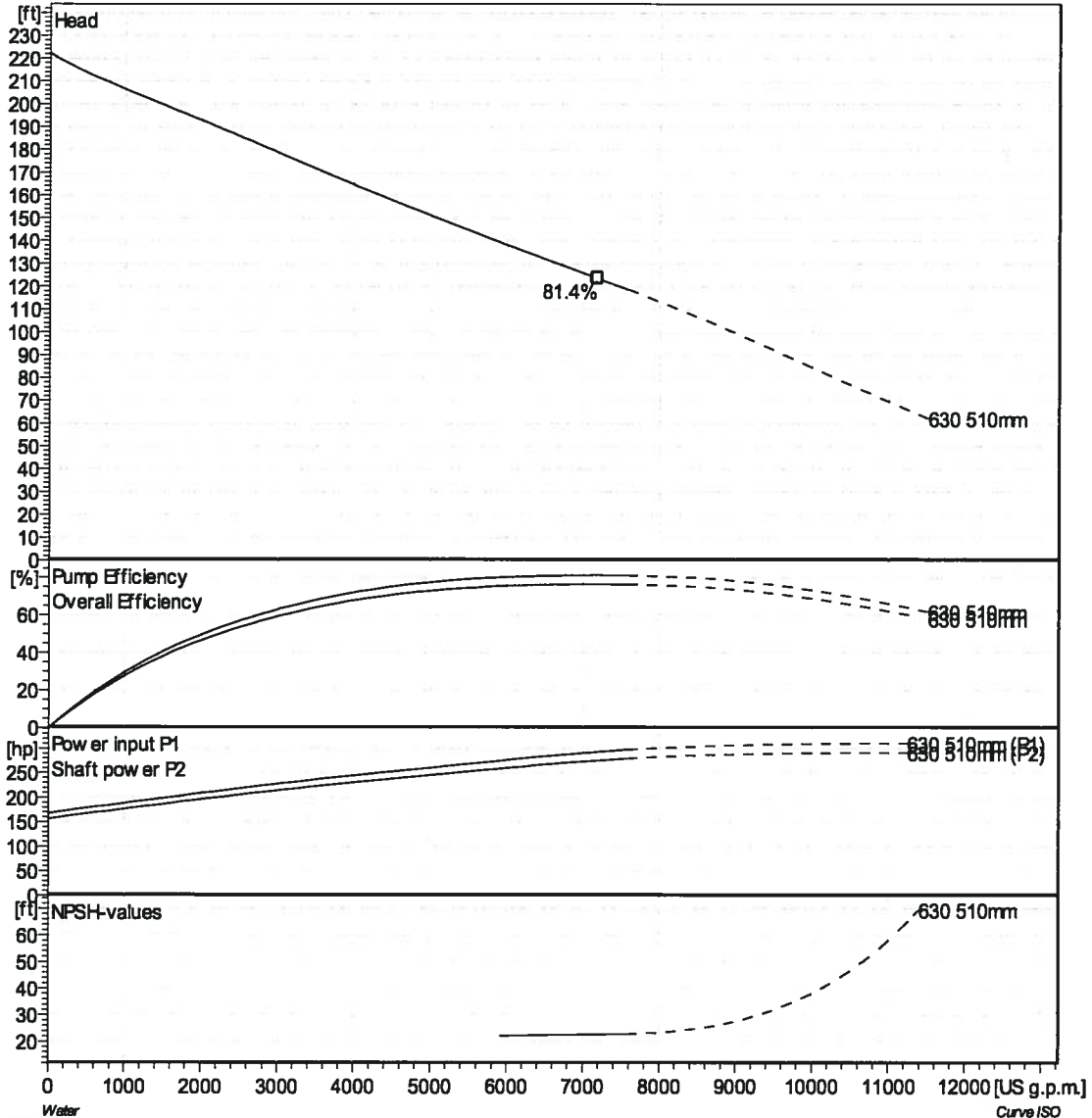
Pump

Discharge Flange Diameter 11 13/16 inch
 Inlet diameter 350 mm
 Impeller diameter 20 1/16"
 Number of blades 3
 4 inch

Motor

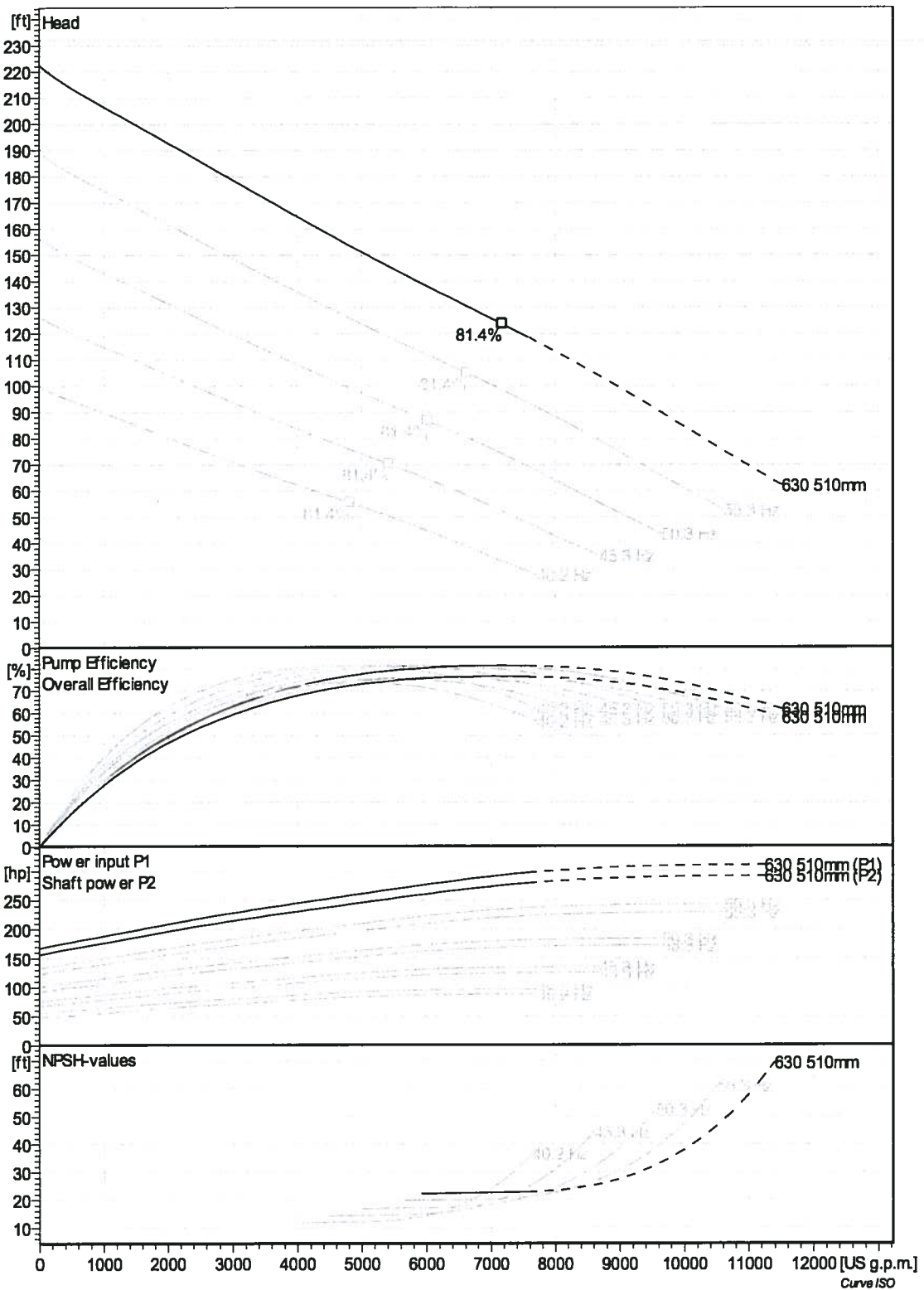
Motor # C0775.000 43-56-6BC-D 280hp
 Approval FM
 Stator variant 1
 Frequency 60 Hz
 Rated voltage 460 V
 Number of poles 6
 Phases 3~
 Rated power 280 hp
 Rated current 345 A
 Starting current 2230 A
 Rated speed 1185 rpm

Power factor
 1/1 Load 0.80
 3/4 Load 0.75
 1/2 Load 0.63
 Motor efficiency
 1/1 Load 94.0 %
 3/4 Load 94.0 %
 1/2 Load 93.0 %



Duty point
 Flow Head Guarantee
 ISO_9906_Grad@rade

| | | | | |
|---------|------------|------------|--------------------------|-------------|
| Project | Project ID | Created by | Created on 2017-03-03 | Last update |
|---------|------------|------------|--------------------------|-------------|



Project

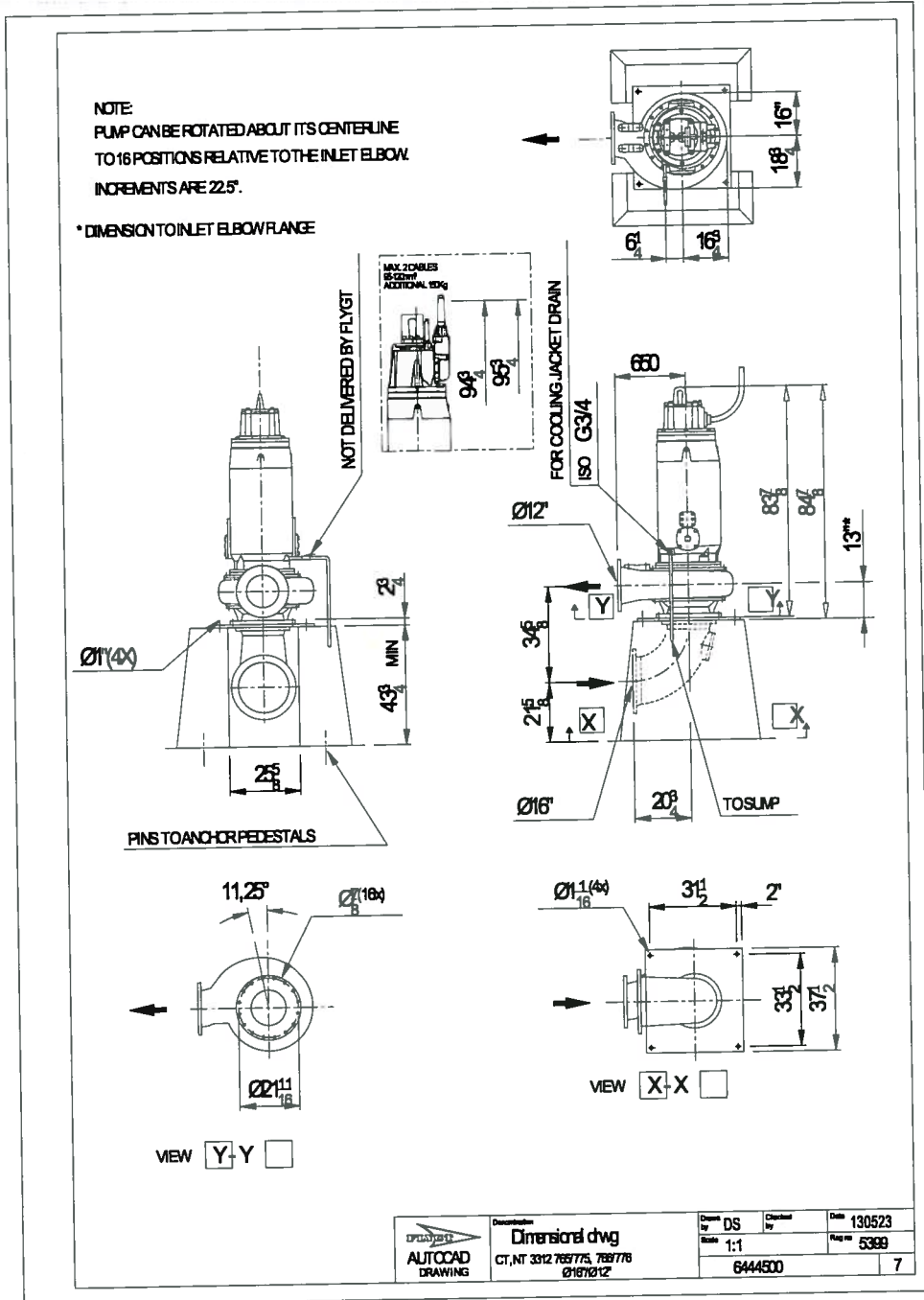
Project ID

Created by

Created on
2017-03-03

Last update

Curve ISO



Project

Project ID

Created by

Created on
2017-03-03

Last update